



Why 26 Blue Cross Blue Shield Plans Use Proactive COB Data to Pay Claims Correctly the First Time

Each year health plans incorrectly pay \$1 billion in claims because more often than not, they don't have access to timely, reliable data about overlapping coverage information. Access to timely, accurate, and prospective coordination of benefits (COB) data is a critical piece to any successful payment integrity program.

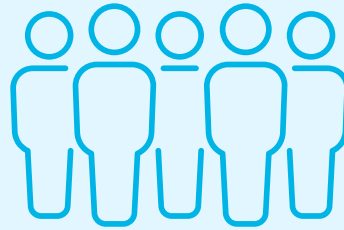
The CAQH COB solution identifies primary and secondary coverage with 99.5 percent accuracy and determines primacy weekly — before claims are paid. This unique prospective approach to COB allows 26 Blue Cross Blue Shield plans to significantly enhance their payment integrity strategy.

26 Broad participation
Blue Cross Blue Shield
Health Plans now participate

Plans with Prospective COB Data from CAQH Have Reported:

A 22% increase in savings associated with avoided claims

A 31% increase in secondary COB identification



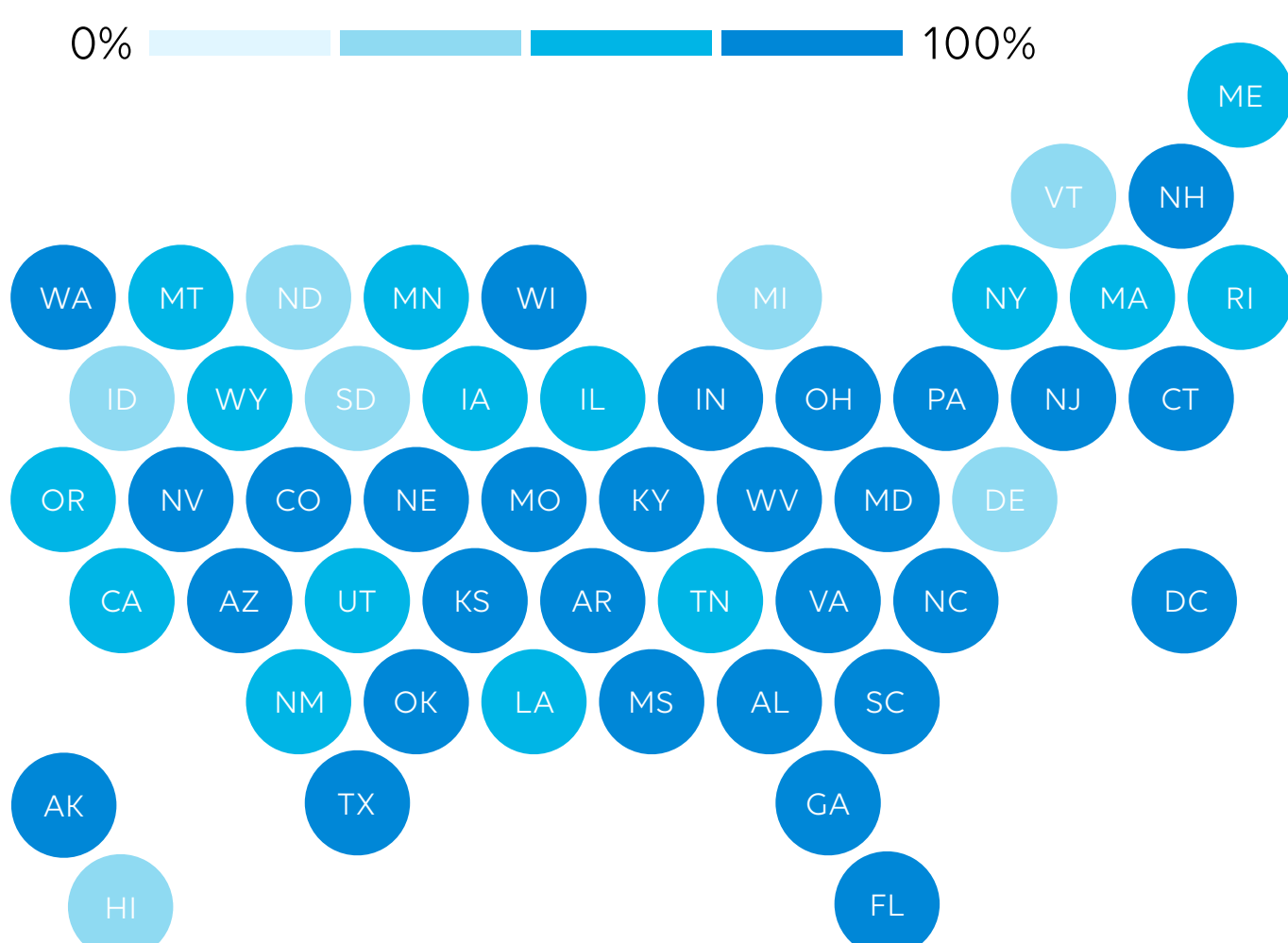
225,000,000

More than 225M lives are represented and counting

99.5% accuracy of validated overlaps



Total Market Penetration



Learn more about how proactive COB data can move you from recovery to prevention.